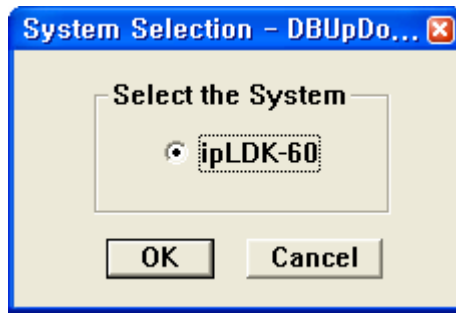


# ipLDK DB Up/download

---

---

## Installation And User Guide





- Contents -

1. Introduction .....	4
2. PC Requirement.....	4
3. Connection method with ipLDK .....	4
4. ipLDK MPB S/W version Compatibility .....	4
5. Installation .....	5
6. File Component in your Execution Directory .....	5
7. Choosing Up/Download and Connection Type .....	5
8. User Information Dialog .....	6
9. Starting Database file upload/download .....	9
10. Transferring Process. ....	10
11. Finishing Database file Upload/Download. ....	10



## **1. Introduction**

DB Up/Down ipLDK is a PC based Window S/W to upload/download ipLDK MBU Database from/to PC file. Three connection types are available(TCP, Serial or MODEM). It is up to the user which connection method he selects. These 3 types slightly differ by configuration, transfer speed and transferring protocol. And *it is strongly recommended that after the user uploads any types of DB, reset the ipLDK system.*

## **2. PC Requirement**

- PC OS : Windows 2000 or later
- PC Memory : 128 MB at least
- PC Free Disk Space : 10Mbytes or higher (larger than 20 M Bytes recommended)
- PC Monitor Resolution : VGA or higher
- PC Modem : General analog dial-up modem (only for upgrading through an analog phone line)-

## **3. Connection method with ipLDK**

DB Up/Down ipLDK is available by the following connection method:

- **Serial connection**

LDK MBU S/W can be updated through RS-232C interface in PC.

- **TCP connection**

LDK MBU S/W can be updated through LAN interface at the remote PC.

- **MODEM connection**

LDK MBU S/W can be updated through MODEM interface at the remote PC.

## **4. ipLDK MPB S/W version Compatibility**

The available ipLDK-60 MPB S/W version is C.7Aa or later.

## 5. Installation

DB Up/Down ipLDK is distributed with PC Admin for ipLDK-60.

- Refer to the installation of PC Admin for ipLDK.

*Note* : In setup procedure, If your PC is Windows 95 generic or some system DLL Files should be update , setup program request restart your PC

## 6. File Component in your Execution Directory

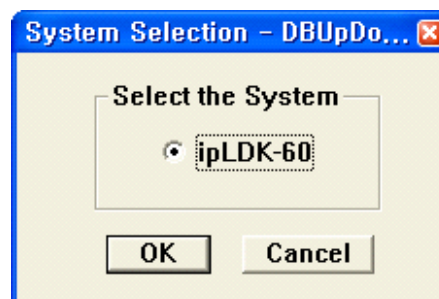
If you install DB Updown successfully, the following files reside in execution directory

- DBUD ipLDK.Exe : Main Execution File
- Capi2032.dll : DLL File for ISDN operations

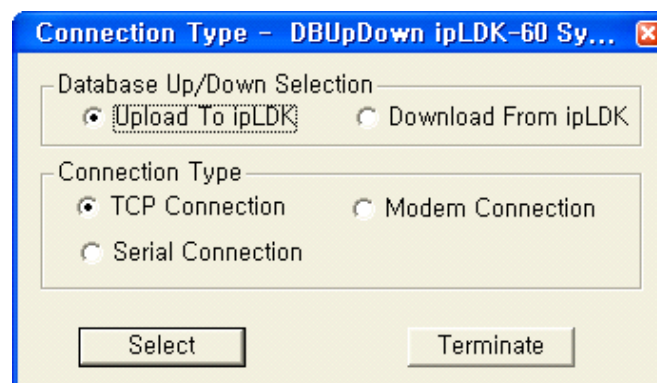
## 7. Choosing Up/Download and Connection Type

To upload the database file in your PC to the ipLDK system, user must choose Upload To ipLDK. Or, to download the ipLDK MPB's database from the ipLDK to your PC, user must choose Download From ipLDK.

You have to select which system you are connecting to.



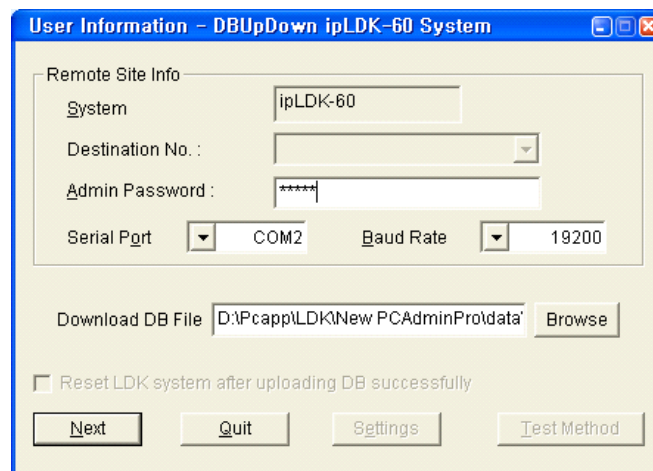
DB Up/Down ipLDK is available through TCP, Modem and Serial connection. Please choose the desired connection type. User will see a short dialog showing the requirements for the selected connection type. Please check this basic requirements before getting started.



## 8. User Information Dialog

After selecting the desired connection type user has to decide several configuration requirements including Admin Password, Database File(\*.usr) etc. in the “User Information Dialog”. It slightly differs according to the selected connection type.

### *Up/Download by Serial Connection*



Please enter the following entries for Serial connection.

*Serial Port*.: Serial port No. in PC connected to ipLDK COM port .

*Baud Rate*.: Choose the transferring baud rate.(*Note*)

*Admin Password*.: If ipLDK requires password to upload/download MBU S/W DB.

*Database File*.: The database file to be uploaded/downloaded.

*Check Button*.: Check this button if a user wants to reset the ipLDK system after uploading DB successfully. It is strongly recommended that after the user uploads any types of DB, reset the ipLDK system.

*Note*.: The transferring baud rate in PC and the baud rate of COM port in ipLDK system must be identical. You can program ipLDK system baud rate by PGM174.(For more information please refer to ipLDK Functional Specification.)

*Note*.: If you set PC's and ipLDK system's transferring baud rate as 57600 bps, it might happen that some keysets display incorrect characters in their LCD, or that ipLDK system be unstable. But, the rate will be the faster way of upgrading. (19200bps and 9600bps are also available)

Press Next button to go to the next step.

## *Up/Download by TCP Connection*

The screenshot shows a Windows-style dialog box titled "User Information - DBUpDown ipLDK-60 System". It contains the following fields and controls:

- Remote Site Info:**
  - System:** Text box containing "ipLDK-60".
  - IP Address:** Dropdown menu showing "150.150.131.164".
  - Admin Password:** Empty text box.
  - Serial Port:** Dropdown menu showing "COM2".
  - Baud Rate:** Dropdown menu showing "19200".
- Download DB File:** Text box containing "D:\Pcapp\LDK\New PCAdminPro\data" with a "Browse" button to its right.
- Reset LDk system after uploading DB successfully:** A checkbox that is currently unchecked.
- Buttons:** "Next", "Quit", "Settings", and "Test Method" are located at the bottom of the dialog.

Please enter the following entries for TCP connection.

*IP Address:* IP address of the destination ipLDK system .( *Note*)

*Admin Password:* If ipLDK requires password to upload/download MBU S/W DB.

*Database File:* The database file to be uploaded/downloaded.

*Check Button:* Check this button if a user wants to reset the ipLDK system after uploading DB successfully. It is strongly recommended that after the user uploads any types of DB, reset the ipLDK system.

*Note:* Assign ipLDK system IP address before you attempt to TCP connection. You can program ipLDK system IP address by PGM108.(For more information please refer to ipLDK Functional Specification.)

Press Next button to go to the next step.

## *Up/Download by MODEM Connection*

The screenshot shows a Windows-style dialog box titled "User Information - DBUpDown ipLDK-60 System". It contains the following fields and controls:

- Remote Site Info:**
  - System: Text box containing "ipLDK-60"
  - Dial No.: Dropdown menu showing "26303620"
  - Admin Password: Empty text box
  - Serial Port: Dropdown menu showing "COM2"
  - Baud Rate: Dropdown menu showing "19200"
- Download DB File:** Text box containing "D:\Pcapp\LDK\New PCAdminPro\data" with a "Browse" button to its right.
- Reset LDk system after uploading DB successfully:** A checkbox that is currently unchecked.
- Buttons:** "Next", "Quit", "Settings", and "Test Method" are located at the bottom of the dialog.

If user selects MODEM configuration the next step is to set the  
Please enter the following entries.

*Dial No.:* Analog telephone number of the destination ipLDK system.(*Note*)

*Admin Password:* If ipLDK requires password to update MBU S/W.

*Range:* The range of DB, which a user wants to upload/download (such as All DB, LCR only, SPD only)

*Database File:* The database file to be uploaded/downloaded.

*Valid:* It displays the validity of the range of DB, and pushing "Check" button can check the validity.

*Check Button:* Check this button if a user wants to reset the ipLDK system after uploading DB successfully. It is strongly recommended that after the user uploads any types of DB, reset the ipLDK system.

*Note:* Assign The Analog telephone number of ipLDK system to Modem associated device before you attempt to MODEM connection. You can program set the analog line to modem associated device by PGM170.(For more information please refer to ipLDK Functional Specification.)

*Note:* The transferring baud rate in PC and the baud rate of Modem port (COM Port 3) in ipLDK system must be identical. You can program ipLDK system baud rate by PGM174.(For more information please refer to ipLDK Functional Specification.) Using 9600 bps is recommended.(2400bps is available but slow. And, 19200bps is also available but a little unstable.)

Press Next button to go to the next step.

## 9. Starting Database file upload/download

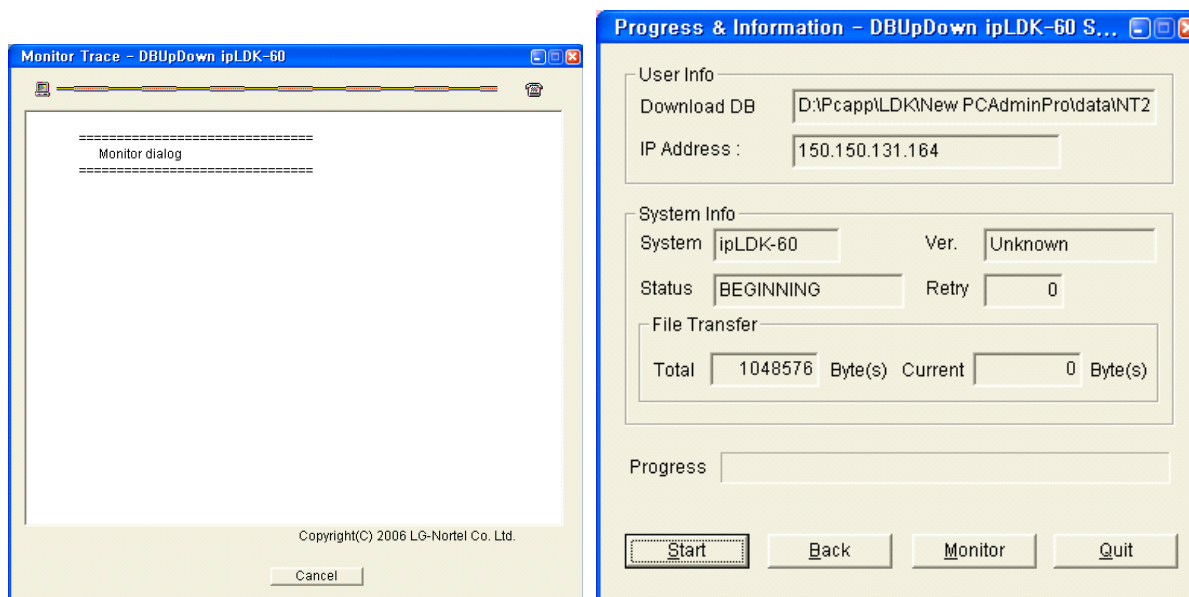
After setting the detailed configuration for the selected connection type, now user is ready to start ipLDK DB Upload/Download. User has the following choice.

Start: Database transfer process will start .

Back: Go to the previous step.

Monitor: Monitor Trace window.

Quit: Program will be terminated.



If user presses *Start* button at this time all other button except *Monitor* button will be deactivated. In "*Monitor Trace*" window the undergoing progress will be displayed. (*Note*)

*Note:* In MODEM connection after pressing *Start* button user has to select the details for the MODEM interface in the PC. Press OK to getting started.

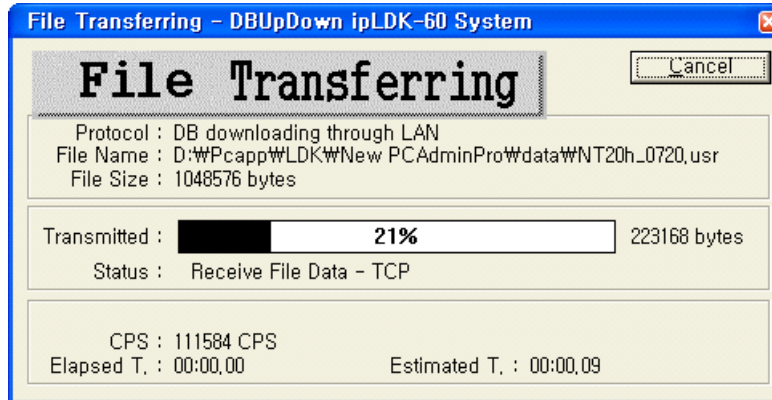
## 10. Transferring Process.

When database file transfer is undergoing user can monitor the process.

In ISDN connection user can show the transferring process in the Monitor Dialog window.

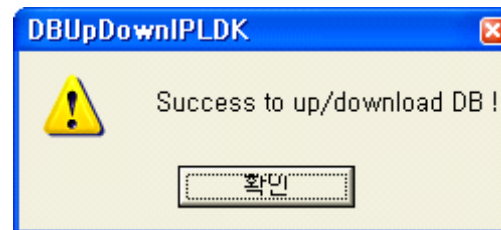
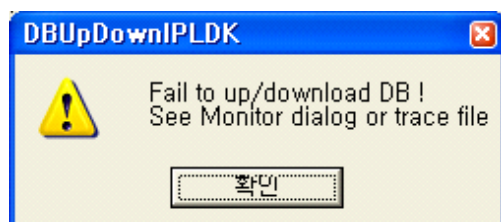
And hence Serial, Modem and TCP connection is using Z-Modem transfer protocol the sending process will be displayed in Z-Modem window.

*Note*> In version3, TCP connection isn't using Z-Modem transfer. So, you can finish the process quickly.



## 11. Finishing Database file Upload/Download.

After S/W transferring process is finished Result dialog will be displayed. And if user presses "OK" button user will show the dialog below. User can start another upload/download by selecting Yes button.



*Note:* It is strongly recommended that after the user uploads any types of DB, reset the ipLDK system.